

# High-density polyethylene clean pails

High-density polyethylene clean pails, open-type high-density polyethylene clean pails, and clean chemi-drums



Exterior



Interior

We provide new products that minimize residual liquid, and are environmentally friendly.

## Specifications

(Unit: mm)

Capacity	Pail height (external)	External diameter (lid)	External diameter (body)	External diameter (bottom)
10L	250±3*	290±2	287±2	280±2*
20L	415±3*	290±2	287±2	280±2*
20L Open-type	419.5±3* (Band included)	307±2	287±2	280±2*
60L	610±5	396±3	392±3	396±3*

\* Including plastic ring

## Dispenser

As pressurized liquids can be dispensed, the pail can be used in clean rooms. Available in PTFE, stainless steel and PTFE-stainless composite.



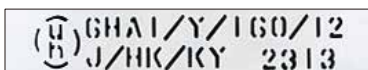
A PTFE dispenser

## Polyethylene interior material

We use additive- and contaminant-free high-density polyethylene.

## Level of cross-contamination

**50 or fewer particles** of 0.2 μm or larger, per ml  
**5 or fewer particles** of 0.5 μm or larger, per ml



The UN marking symbols for a 60-liter chemi-drum



The UN marking symbols for 10-liter, 20-liter, and 20-liter open-type high-density polyethylene clean pails



An installed PTFE dispenser

# High-density polyethylene clean pails

High-density polyethylene clean pails,  
open-type high-density polyethylene clean pails,  
and clean chemi-drum

## High-density polyethylene clean pails

10L



Exterior



Interior

20L



Exterior



Interior



Internal container cap shape

### Characteristics

The chemical-resistant, clean, high-density polyethylene interior combined with an impact-resistant steel pail creates a double structure suitable for transporting hazardous materials under the UN Recommendations on the Transport of Dangerous Goods.

The high-density polyethylene interior is shaped so as to minimize the amount of residual liquid, with liquid inside the container dispensed by pump. The pail can then be turned upside down to pour out any remaining liquid.

[Patent No. 4527630]

## Open-type high-density polyethylene clean pail

20L



Exterior



Interior



### Characteristics

We have improved our conventional 20-liter high-density polyethylene clean pails so that the lid can be removed, and they are suitable for transporting hazardous materials under UN standards.

Giving full consideration to environmental issues, the lid has been designed to be easily removed by opening the lever band, allowing separate disposal of the polyethylene interior and steel plate exterior. [Patent pending in Japan, China and Taiwan]

The high-density polyethylene interior is shaped so as to minimize the amount of residual liquid, with liquid inside the container dispensed by pump. The pail can then be turned upside down to pour out any remaining liquid.

The lid's pressure-resistant capabilities (the degree of warping as a result of internal pressure) are comparable to our conventional pails. For the lever band, chromium-plated steel is used, with rust-resistance comparable to our conventional pails.

[Patent No. 4527630]

## Clean chemi-drum

60L



Exterior



Interior

### Characteristics

The chemical-resistant, clean, high-density polyethylene interior combined with an impact-resistant 60-liter steel pail creates a double structure suitable for transporting hazardous materials under the UN Recommendations on the Transport of Dangerous Goods.

For production lines that deal with large quantities, fewer replacements of liquid (or container) are necessary, improving work efficiency.

[Patent pending in Japan, China and Taiwan]



Japan Pail Corporation

Inquiries

### Sales Department

Nishihonmachi Daigo Building 6F, 2-4-23 Awaza, Nishi-ku,  
Osaka 550-0011, Japan

TEL. +81-6-6535-1721

### Tokyo Branch

Yoshino Dai-ichi Building 5F, 1-6-3 Nihonbashi Bakurocho, Chuo-ku,  
Tokyo 103-0002, Japan

TEL. +81-3-5649-2212